



House 'To Let'

£1,295 PCM

Dovedale, Thornbury



KEY FEATURES

Semi Detached House - Three Bedrooms - Porch - Lounge/Diner- Modern Kitchen- Modern Bathroom With Shower Over Bath - Separate W/C Room - Garden- Garage - Off Street Parking - Gas Central Heating - Double Glazing - EPC C
EPC - C - DEPOSIT £1494.00

Description

This three bedroom semi-detached house is presented in excellent condition and comprises entrance porch, open plan lounge/dining area, modern kitchen with cooker and under stairs storage. Upstairs you have three bedrooms with the master bedroom benefiting from a fitted wardrobe, separate toilet room and a modern bathroom with shower over bath. This property further benefits from gas central heating, double glazing, garden to the front and rear and garage along with off street parking. Available 6th December for six months to long term.



Situation

Thornbury is a thriving market town where the High Street offers a variety of shops, cafes, pubs and restaurants. Facilities include the Leisure Centre, Golf Course and Library. The town is blessed with a number of primary and junior schools, plus The Castle secondary school (www.castle.gloucs.sch.uk) which is situated on the edge of open countryside close to Thornbury Castle.



Local Authority & Council Tax

SouthGloucestershireCouncil
Council Tax Band - B



Contact & Viewing

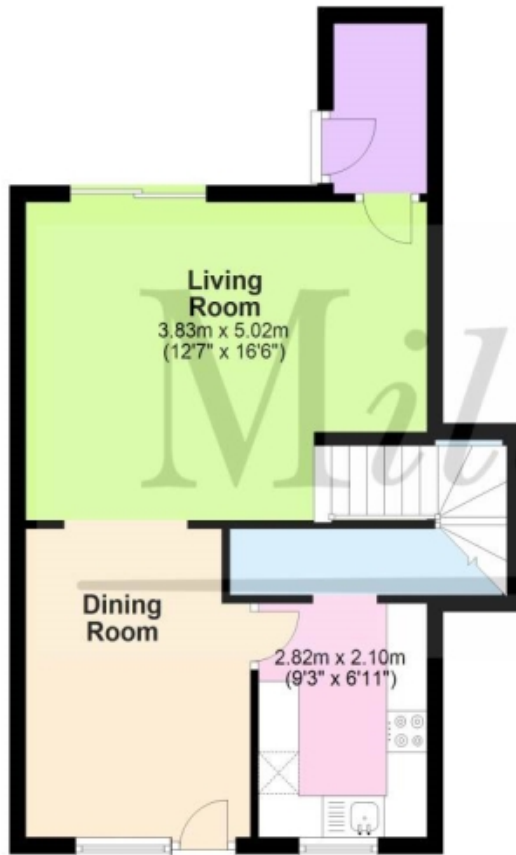
T: 01454 417336
w: www.milburys.co.uk



Floorplan

Ground Floor

Approx. 42.5 sq. metres (457.7 sq. feet)



First Floor

Approx. 40.6 sq. metres (437.1 sq. feet)



Additional Photos



Important Notice

Milburys Estate Agents Ltd, their clients and any joint agents give notice that they have not tested any apparatus, equipment, fixtures, fittings, heating systems, drains or services and so cannot verify they are in working order or fit for their purpose. Interested parties are advised to obtain verification from their surveyor or relevant contractor. Statements pertaining to tenure are also given in good faith and should be verified by your legal representative. Digital images may, on occasion, include the use of a wide-angle lens. Please ask if you have any queries about any of the images shown, prior to viewing. Where provided, floor plans are shown purely as an indication of layout. They are not scale drawings and should not be treated as such. Complete listings and full details of all our properties (both for sale and to let) are available at www.milburys.co.uk