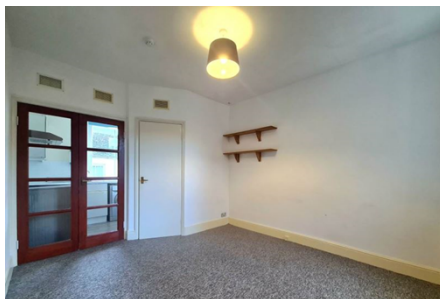


Flat / Apartment 'To Let'
£695 PCM
27 Long Street, Wotton-under-Edge



KEY FEATURES

One Bedroom First Floor Flat - High Street Position - Lounge - Bedroom - Separate Kitchen with Cooker, Fridge & Washing Machine - Shower Room - On Road Parking - Electric Heating - Unfurnished.
EPC - E - DEPOSIT £801.00

Description

A well presented one bedroom apartment situated in the heart of this historic market town. Offered on an unfurnished basis the accommodation comprises; hallway, double bedroom, living room, shower room with shower cubicle, WC and wash hand basin and a bright kitchen with electric cooker, fridge and washing machine. The property has electric heating throughout and benefits from being within easy walking distance of the town's shops and amenities. Available now for six months to long term. No smokers. (EPC-E)



Situation

This charming Cotswold market town enjoys a vibrant High Street with an eclectic mix of independent shops and cafes, further complemented by two mini-supermarkets plus its own independent cinema (dating back to 1911) which shows current and arthouse films with digital and 3D equipment! Wotton-under-Edge is situated amidst beautiful countryside on the edge of the Cotswold escarpment, ideal for those wanting to be part of a thriving community. The M5 Junction 14 is approx. 5.1 miles for commuters to Bristol, Gloucester and Cheltenham whilst Tetbury is 10.1 miles. For rail links to Bristol and Gloucester Cam and Dursley Railway Station is approx. 7 miles away. There are two Primary Schools centrally located in Wotton plus you will find more in the surrounding villages of Charfield, Tortworth and Hillesley. Outdoor pursuits include exploring the Cotswold Way which runs directly through the town, the local Golf club and a refurbished Open Air Pool Swimming Pool (seasonal) with a retractable enclosure.



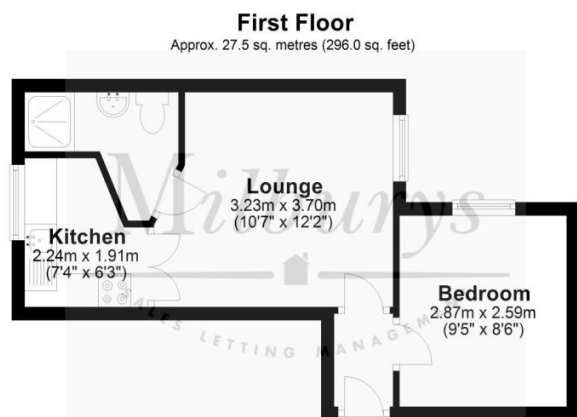
Local Authority & Council Tax

StroudDistrictCouncil
Council Tax Band - A



Contact & Viewing

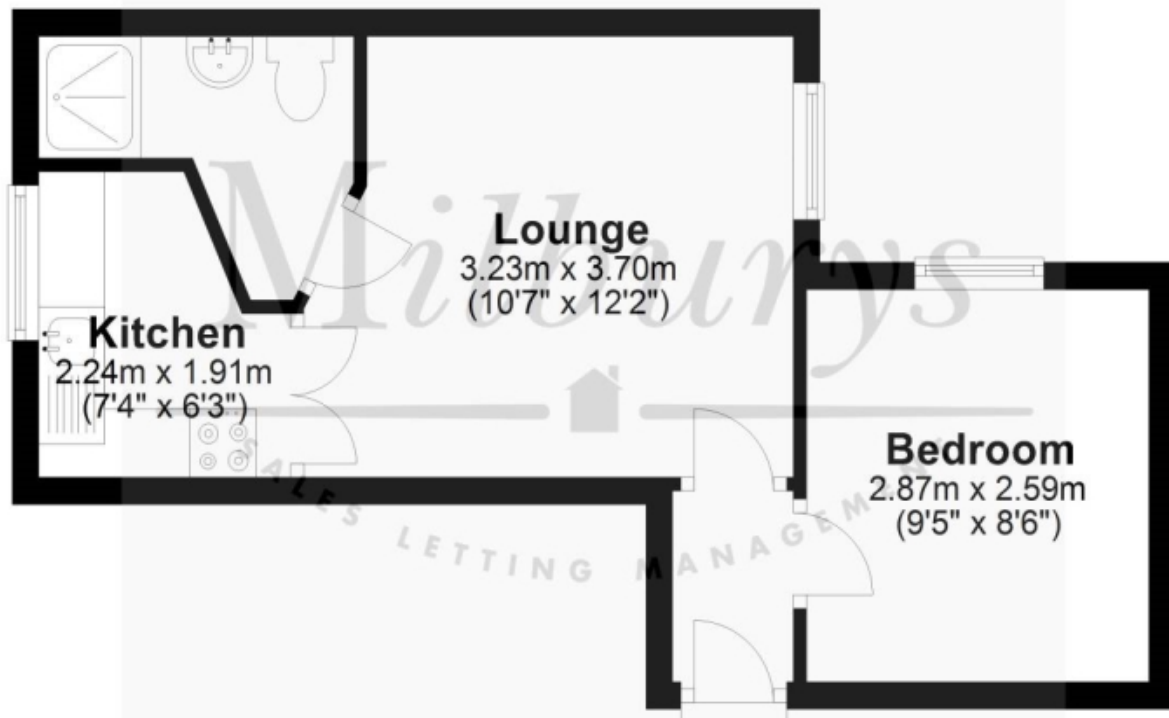
T: 01454 417336
w: www.milburys.co.uk



Total area: approx. 27.5 sq. metres (296.0 sq. feet)

First Floor

Approx. 27.5 sq. metres (296.0 sq. feet)



Total area: approx. 27.5 sq. metres (296.0 sq. feet)

Additional Photos

Important Notice

Milburys Estate Agents Ltd, their clients and any joint agents give notice that they have not tested any apparatus, equipment, fixtures, fittings, heating systems, drains or services and so cannot verify they are in working order or fit for their purpose. Interested parties are advised to obtain verification from their surveyor or relevant contractor. Statements pertaining to tenure are also given in good faith and should be verified by your legal representative. Digital images may, on occasion, include the use of a wide-angle lens. Please ask if you have any queries about any of the images shown, prior to viewing. Where provided, floor plans are shown purely as an indication of layout. They are not scale drawings and should not be treated as such. Complete listings and full details of all our properties (both for sale and to let) are available at www.milburys.co.uk