

Flat / Apartment 'To Let'

£695 PCM

Garage Annexe to Chapel Cottage, The Down



**KEY FEATURES**

Self Contained Flat - Open Plan Living Space - Shower Room - Private Entrance - Would Suit The Business Person Wanting A Monday-Friday Let - All Bills Included - Fully Furnished.

**EPC - C - DEPOSIT £801.00**

## Description

**\*\*PLEASE NOTE MONDAY TO FRIDAY LET ONLY\*\*** This refurbished self-contained studio flat provides open plan living with kitchen amenities including a sink, microwave, fridge, kettle and toaster. Access is via a private entrance leading to an inner hallway, open plan living space, modern shower room with white suite and off street parking. Internet and TV are included as are all of the utility bills. The room is fully furnished and includes linen and towels which will be cleaned/changed on a weekly basis. Would Ideally suit a business traveller looking for an alternative to a hotel and wanting a Monday to Friday let. Short term lets are also available. Please call for further details. Not suitable for pets. Non smokers only. Available 2nd March 2025.



## Situation

Alveston is a village north of Bristol, some 4.3 miles from the M4/M5 interchange at Almondsbury, 7.2 miles from Bristol Parkway Station and 10.5 miles from the City Centre. The Severn Bridge and the M48 (M4/South Wales) are 4.6 miles to the west. - ideal for commuters. It boasts a secondary school, [www.marlwood.com](http://www.marlwood.com) and St. Helen's Primary School, plus a useful parade of shops - including an award-winning butcher, a post office, a public house and a hotel. The market town and local centre of Thornbury is 1.3 miles to the north.



## Local Authority & Council Tax

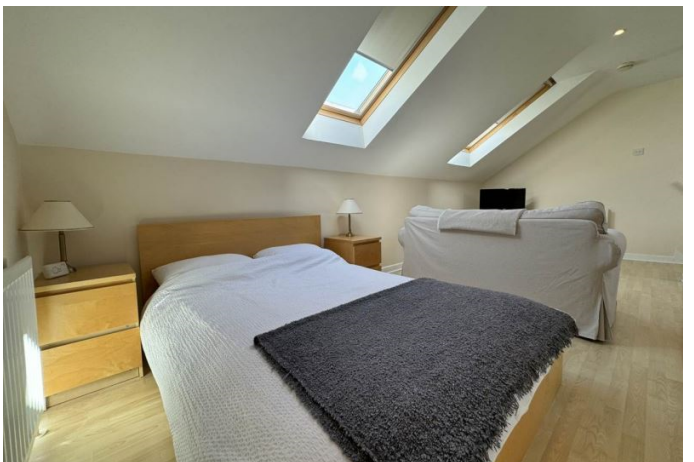
Council Tax Band -



## Contact & Viewing

T: 01454 417336

w: [www.milburys.co.uk](http://www.milburys.co.uk)



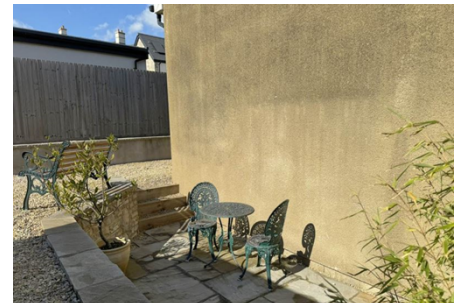
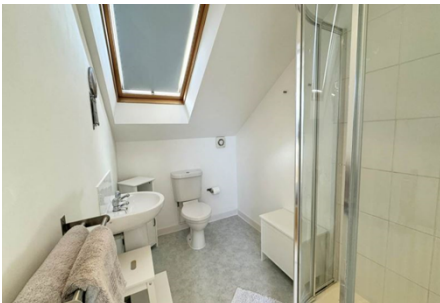


## First Floor

Approx. 35.3 sq. metres (380.2 sq. feet)



## Additional Photos



## Important Notice

Milburys Estate Agents Ltd, their clients and any joint agents give notice that they have not tested any apparatus, equipment, fixtures, fittings, heating systems, drains or services and so cannot verify they are in working order or fit for their purpose. Interested parties are advised to obtain verification from their surveyor or relevant contractor. Statements pertaining to tenure are also given in good faith and should be verified by your legal representative. Digital images may, on occasion, include the use of a wide-angle lens. Please ask if you have any queries about any of the images shown, prior to viewing. Where provided, floor plans are shown purely as an indication of layout. They are not scale drawings and should not be treated as such. Complete listings and full details of all our properties (both for sale and to let) are available at [www.milburys.co.uk](http://www.milburys.co.uk)