



House 'To Let'
£1,200 PCM
Primrose Drive, Thornbury



KEY FEATURES

Two Bedroom Mid-Terrace House - Gas Central Heating - Double Glazing - Lounge - Modern Kitchen - Bathroom - Off Road Allocated Parking For Two Cars - Unfurnished
EPC - [[EPCImages.EERImage.CurrentAsLetter]] - DEPOSIT £1384.00

Description

This well presented two-bedroom mid-terrace house is offered on an unfurnished basis with the ground floor accommodation comprising, hallway, modern kitchen and lounge with access onto enclosed rear garden. On the first floor you will find two bedrooms and a bathroom with an electric shower over bath. Outside there is a low maintenance enclosed rear garden and allocated parking for 2 cars at the front of the property. Further benefits include; Upvc double-glazing and gas central heating. Would ideally suit a single person or couple. Non smokers only. Available mid January 2025.



Situation

Thornbury is a thriving market town to the north of the City of Bristol and the M4/M5 interchange, with excellent commuting links via the motorway network and by rail from Bristol Parkway Station (Paddington/South Wales). The High Street offers a wide variety of shops, cafes, pubs and restaurants. Other facilities include the leisure centre, golf course and library, plus open community spaces, parks and sports grounds/clubs. The town is blessed with a number of primary and junior schools, plus The Castle secondary school (www.castle.gloucs.sch.uk) which is situated on the edge of open countryside close to Thornbury's Tudor Castle, now a luxury hotel.



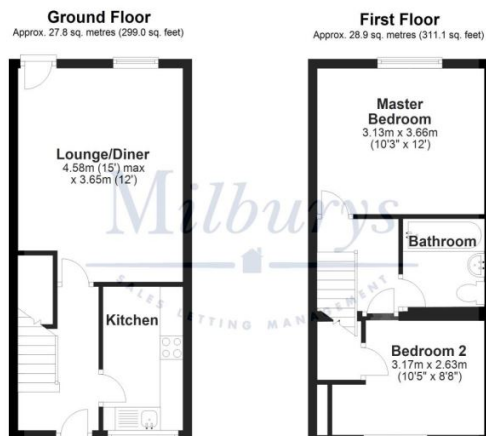
Local Authority & Council Tax

South Gloucestershire Council
Council Tax Band - B

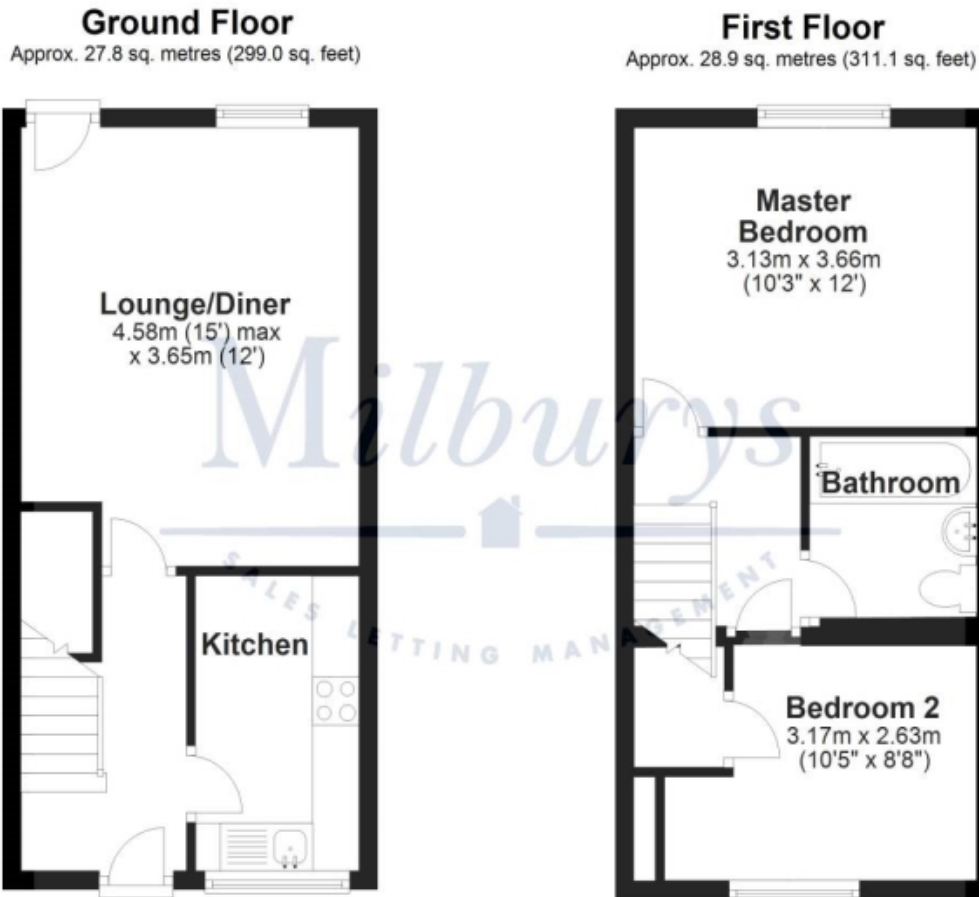


Contact & Viewing

T: 01454 417336
w: www.milburys.co.uk



Floorplan



Additional Photos

Important Notice

Milburys Estate Agents Ltd, their clients and any joint agents give notice that they have not tested any apparatus, equipment, fixtures, fittings, heating systems, drains or services and so cannot verify they are in working order or fit for their purpose. Interested parties are advised to obtain verification from their surveyor or relevant contractor. Statements pertaining to tenure are also given in good faith and should be verified by your legal representative. Digital images may, on occasion, include the use of a wide-angle lens. Please ask if you have any queries about any of the images shown, prior to viewing. Where provided, floor plans are shown purely as an indication of layout. They are not scale drawings and should not be treated as such. Complete listings and full details of all our properties (both for sale and to let) are available at www.milburys.co.uk