



Detached House 'To Let'

£1,900 PCM

Holywell Road,



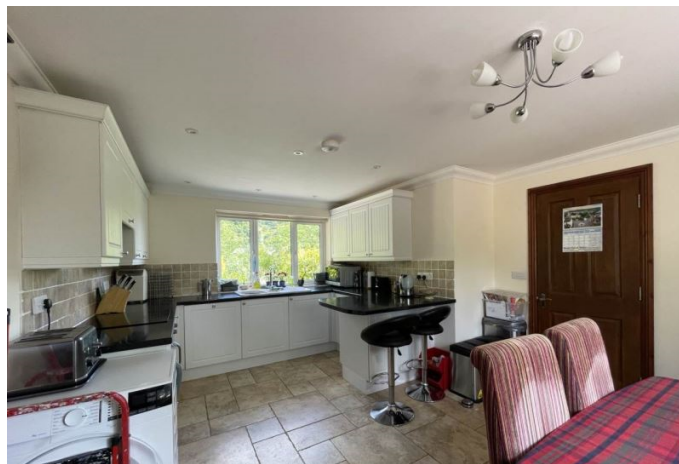
KEY FEATURES

Detached Home over Three Floors – Fabulous Views – Entrance Hall – Large Triple Aspect Lounge – Kitchen/Diner with Cooker, Hob, Dishwasher and Fridge – Utility Room with Washing Machine and Tumble Dryer – Guest Cloakroom – Bedroom 1 and En-Suite on Lower Ground Floor – Three Further Bedrooms and Family Bathroom on 1st Floor – Lots of Off Road Parking – Large Rear Garden – Stunning Views of Surrounding Countryside – Double Glazing – Underfloor Heating – Unfurnished.

EPC - C - DEPOSIT £2192.00

Description

This detached family home is situated on the outskirts of Wotton-under-Edge, with a good size garden, ample parking and beautiful views of the surrounding countryside. It is convenient for access to the High Street, plus it is within commutable distance to the M5 and beautiful Cotswold villages such as Nailsworth and Tetbury. The Cotswold Way is also on your doorstep. Accommodation is spacious and set over three floors. The ground floor has a large triple aspect lounge, kitchen/diner, utility room and a guest cloakroom. The main bedroom and en-suite is on the lower ground floor, whilst three further bedrooms and the family bathroom are on the first floor. The property also has underfloor heating and double glazing. Available from mid-July 2024 for six months to long term. No smokers. (EPC-C)



Situation

This charming market town enjoys a vibrant High Street with an eclectic mix of independent shops and cafes, complemented by two well-known supermarkets – it even has its own cinema! Wotton-under-Edge is situated amidst beautiful countryside on the edge of the Cotswold escarpment – the Cotswold way runs straight through, perfect for walkers. Tetbury (approx. 10.1 miles), Cirencester, Bristol, Cheltenham (M5 J14 approx. 5.1 miles) make it an ideal location for families, commuters and outdoor enthusiasts. Katharine Lady Berkeley's Secondary School is an important element in the town and there are two primary schools. Please visit wotton-under-edge.com for a wealth of further information.



Local Authority & Council Tax

StroudDistrictCouncil
Council Tax Band - E

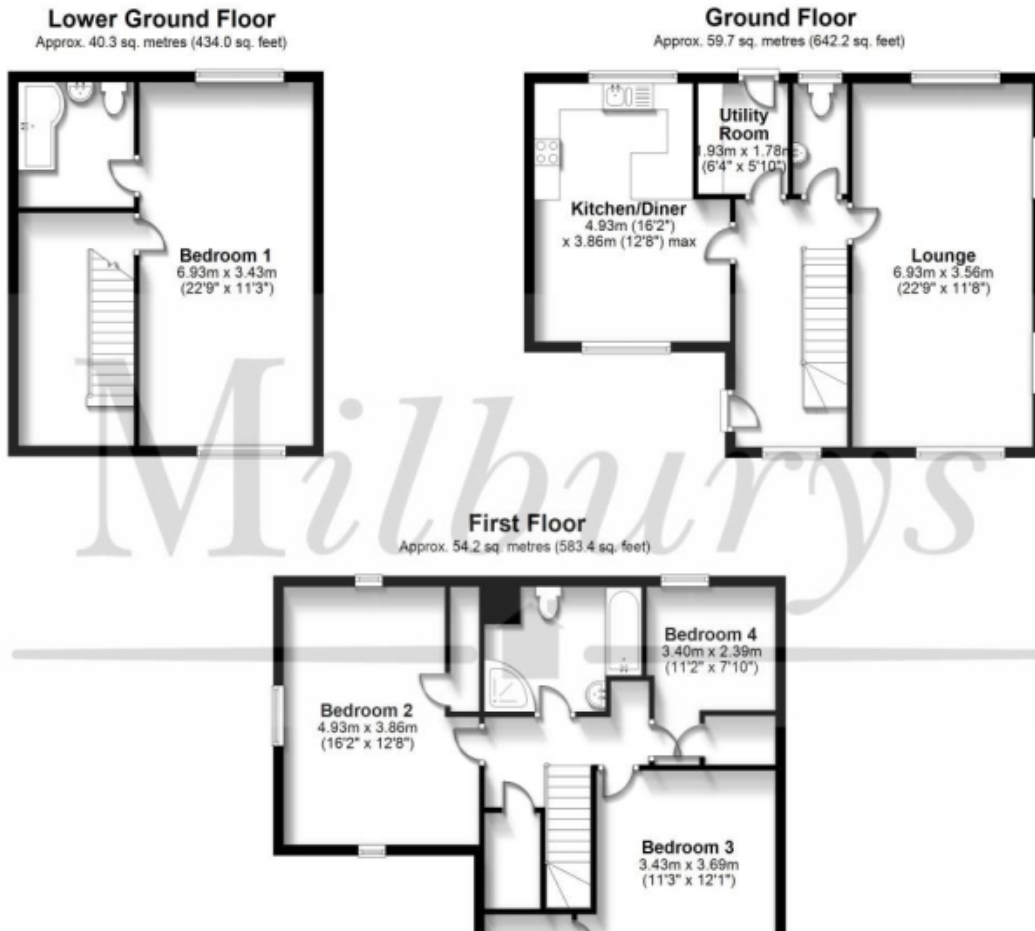


Contact & Viewing

T: 01454 417336
w: www.milburys.co.uk



Floorplan



Additional Photos



Important Notice

Milburys Estate Agents Ltd, their clients and any joint agents give notice that they have not tested any apparatus, equipment, fixtures, fittings, heating systems, drains or services and so cannot verify they are in working order or fit for their purpose. Interested parties are advised to obtain verification from their surveyor or relevant contractor. Statements pertaining to tenure are also given in good faith and should be verified by your legal representative. Digital images may, on occasion, include the use of a wide-angle lens. Please ask if you have any queries about any of the images shown, prior to viewing. Where provided, floor plans are shown purely as an indication of layout. They are not scale drawings and should not be treated as such. Complete listings and full details of all our properties (both for sale and to let) are available at www.milburys.co.uk