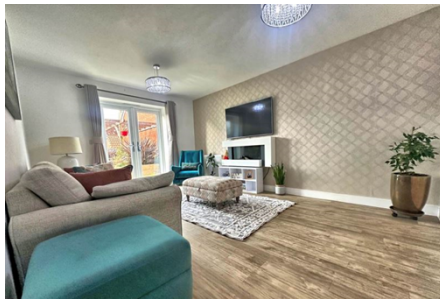




House 'To Let'

£2,100 PCM

Peacock Road, Thornbury



KEY FEATURES

Countryside Views - Walks From The Doorstep - Set Out Over Three Floors - Entrance Hall - Cloakroom - Study/Play Room - Lounge - Kitchen/Dining/Family Space - Integrated Appliances - Separate Utility Room - Four Double Bedrooms (One With Shower Room), Family Bathroom With Shower Over Bath - On The Top Floor - Master Bedroom With En-Suite & Dressing Area With Fitted Wardrobes- Garage - Off-Street Parking - Car Charger - Enclosed Rear Garden With Patio Area - Gas Central Heating - Double-Glazing - Unfurnished - (EPC-B)

EPC - B - DEPOSIT £2123.00

Description

This fantastic detached family home is situated in the ever popular Thornbury Fields development. The accommodation is set out over three floors and includes five bedrooms, two with an en-suite and dressing area, family bathroom with shower over bath, a generous lounge to the front, fantastic open-plan kitchen/dining (white goods included are fridge/freezer, dishwasher, cooker & washing machine). Completing the package is a separate utility room, study/playroom and cloakroom. Outside is equally impressive with garage, off-street parking for two cars and a generous garden with patio area. Available early February for six months to long term. EPC- B



Situation

Thornbury is a thriving market town to the north of the City of Bristol and the M4/M5 interchange, with excellent commuting links via the motorway network and by rail from Bristol Parkway Station (Paddington/South Wales). The High Street offers a wide variety of shops, cafes, pubs and restaurants. Other facilities include the leisure centre, golf course and library, plus open community spaces, parks and sports grounds/clubs. The town is blessed with a number of primary and junior schools, plus The Castle secondary school (www.the-castleschool.org.uk) which is situated close to Thornbury's Tudor Castle, a luxury hotel.



Local Authority & Council Tax

Council Tax Band - F

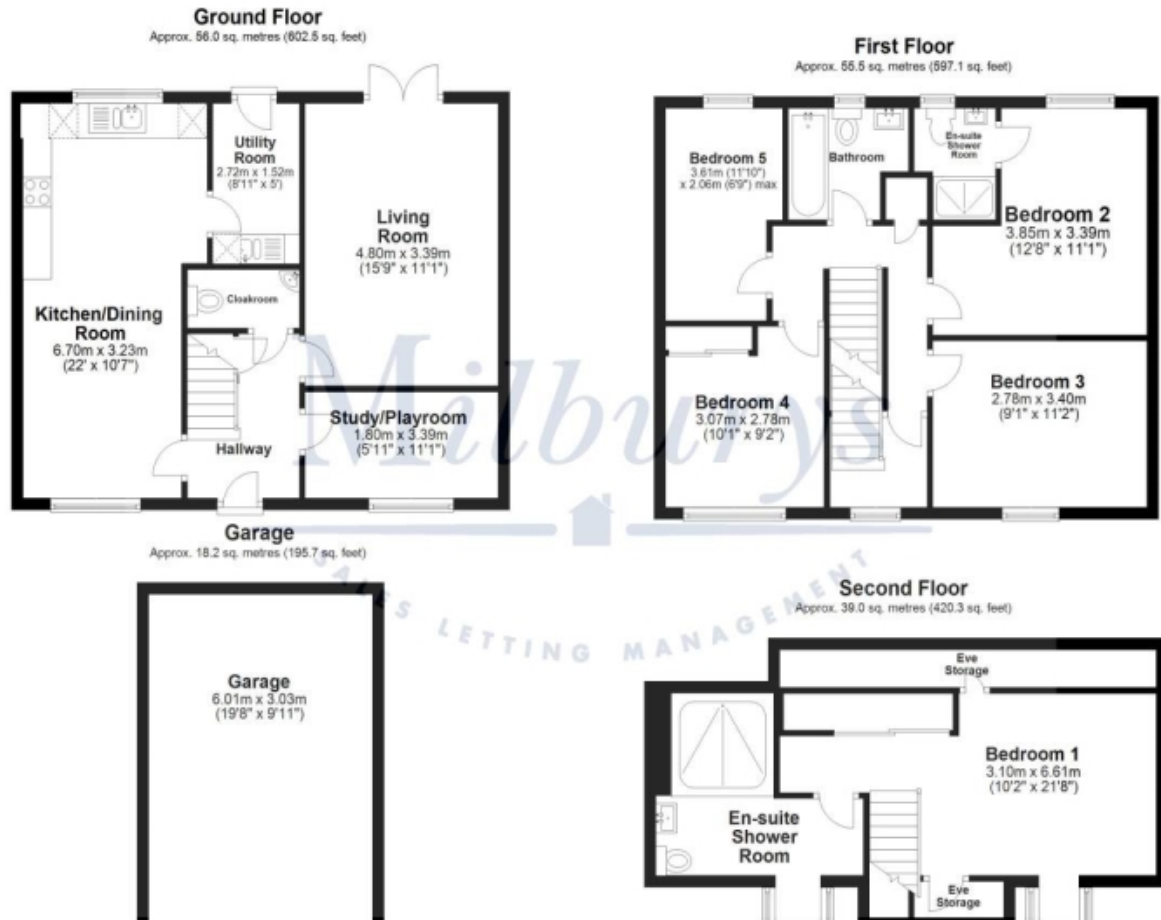


Contact & Viewing

T: 01454 417336
w: www.milburys.co.uk



Floorplan



Additional Photos



Important Notice

Milburys Estate Agents Ltd, their clients and any joint agents give notice that they have not tested any apparatus, equipment, fixtures, fittings, heating systems, drains or services and so cannot verify they are in working order or fit for their purpose. Interested parties are advised to obtain verification from their surveyor or relevant contractor. Statements pertaining to tenure are also given in good faith and should be verified by your legal representative. Digital images may, on occasion, include the use of a wide-angle lens. Please ask if you have any queries about any of the images shown, prior to viewing. Where provided, floor plans are shown purely as an indication of layout. They are not scale drawings and should not be treated as such. Complete listings and full details of all our properties (both for sale and to let) are available at www.milburys.co.uk