



House 'To Let'

£1,395 PCM

Stafford Crescent, Thornbury



#### KEY FEATURES

Recently Updated - Three Bedroom - Terraced House - Kitchen With Gas Hob & Electric Oven, Fridge Freezer, Washing Machine and Dishwasher - Dining Room - Lounge With Electric Fire - Hallway - Two Double Bedrooms (One With Free Standing Wardrobes and en-suite) - Bathroom With Shower Over Bath - Gas C/H - Double Glazing - Garden To The Front & Rear - Parking - Garage - EPC - C  
**EPC - C - DEPOSIT £1609.00**

## Description

Milburys are delighted to bring to the market a newly refurbished three bedroom terraced property. Downstairs comprises hallway, cloakroom, lounge with electric fire, dining area with patio doors leading to the rear garden, kitchen with gas hob/electric oven, fridge freezer, washing machine and dishwasher. Upstairs you have the landing, master bedroom with en-suite and free standing wardrobes, double bedroom, single third bedroom and a family bathroom with shower over bath. Outside you have a lawned garden to the front and rear, separate garage and off street parking. The property has been re-painted throughout and new carpets are to be fitted shortly. Available now for six months to long term. EPC- C



## Situation

Thornbury is a thriving market town to the north of the City of Bristol and the M4/M5 interchange, with excellent commuting links via the motorway network and by rail from Bristol Parkway Station (Paddington/South Wales). The High Street offers a wide variety of shops, cafes, pubs and restaurants. Other facilities include the leisure centre, golf course and library, plus open community spaces, parks and sports grounds/clubs. The town is blessed with a number of primary and junior schools, plus The Castle secondary school ([www.castle.gloucs.sch.uk](http://www.castle.gloucs.sch.uk)) which is situated on the edge of open countryside close to Thornbury's Tudor Castle, now a luxury hotel.



## Local Authority & Council Tax

SouthGloucestershireCouncil  
Council Tax Band - C



## Contact & Viewing

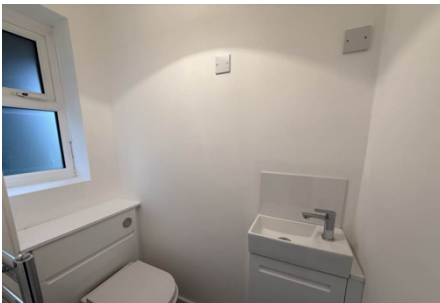
T: 01454 417336  
w: [www.milburys.co.uk](http://www.milburys.co.uk)



## Floorplan



## Additional Photos



## Important Notice

Milburys Estate Agents Ltd, their clients and any joint agents give notice that they have not tested any apparatus, equipment, fixtures, fittings, heating systems, drains or services and so cannot verify they are in working order or fit for their purpose. Interested parties are advised to obtain verification from their surveyor or relevant contractor. Statements pertaining to tenure are also given in good faith and should be verified by your legal representative. Digital images may, on occasion, include the use of a wide-angle lens. Please ask if you have any queries about any of the images shown, prior to viewing. Where provided, floor plans are shown purely as an indication of layout. They are not scale drawings and should not be treated as such. Complete listings and full details of all our properties (both for sale and to let) are available at [www.milburys.co.uk](http://www.milburys.co.uk)