



Flat / Apartment 'To Let'  
**£1,250 PCM**  
High Street, Chipping Sodbury



**KEY FEATURES**

Spacious First Floor Apartment - Ground Floor Entrance Hall - Large Landing - Sitting Room - Kitchen with Cooker/Hob - Breakfast/Dining Area - Two Double Bedrooms - Shower Room - Off Road Parking - Use of the Communal Garden - Electric Heating - Unfurnished.

**EPC - G - DEPOSIT £1442.00**

## Description

This first floor apartment has a lovely central position on Chipping Sodbury High Street. Access is set back under an attractive archway, which also leads to an off street parking space and the lovely communal garden to the rear. Accommodation is spacious throughout, consisting of an entrance hall, large sitting room, kitchen with cooker, breakfast/dining area, two double bedrooms, a generous sized landing area and a shower room. Available from mid-October 2023 for six months to long term. No smokers. (EPC TBC)



## Situation

The historic market town of Chipping Sodbury sits on the edge of the Cotswolds and has excellent road links to the A46, the M4 (Junction 18 is approx 4.9 miles away), M5 (Junction 14 is approx. 8.8 miles away), Bristol and Bath. The nearby Yate train station (approx 1.9 miles away) also provides good transport links for commuters to Bristol. The historic High Street dates back to the 12th Century and offers a wide and eclectic range of shops and established businesses which support the town and attract visitors. There is a selection of both Primary and Secondary Schooling in the general area of good reputation. Chipping Sodbury has many nearby country walks, a lovely common, golf course, cricket club, rugby club, tennis club and the Waitrose store which is a huge attribute to the town.



## Local Authority & Council Tax

South Gloucestershire Council  
Council Tax Band - B

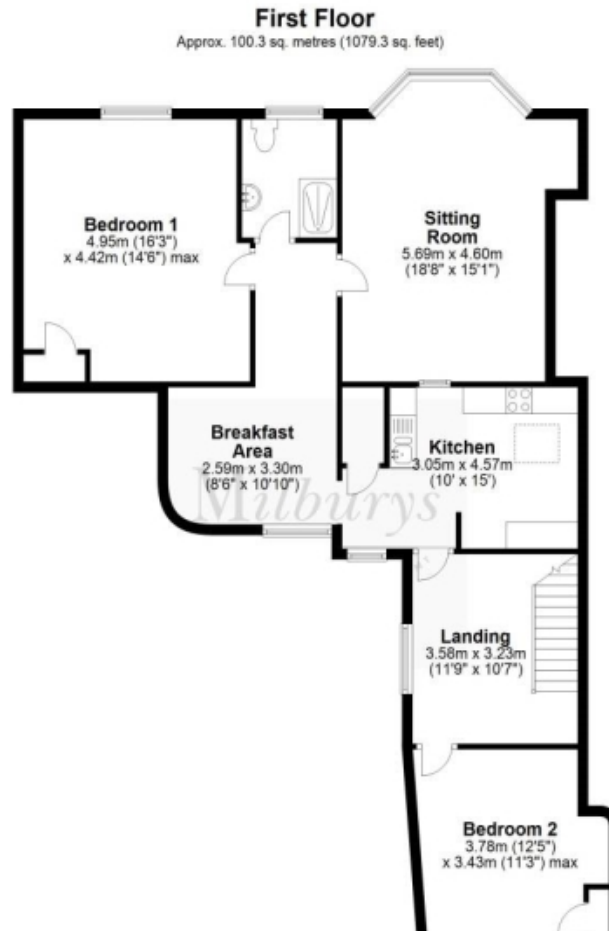


## Contact & Viewing

T: 01454 417336  
w: [www.milburys.co.uk](http://www.milburys.co.uk)



## Floorplan



## Additional Photos



## Important Notice

Milburys Estate Agents Ltd, their clients and any joint agents give notice that they have not tested any apparatus, equipment, fixtures, fittings, heating systems, drains or services and so cannot verify they are in working order or fit for their purpose. Interested parties are advised to obtain verification from their surveyor or relevant contractor. Statements pertaining to tenure are also given in good faith and should be verified by your legal representative. Digital images may, on occasion, include the use of a wide-angle lens. Please ask if you have any queries about any of the images shown, prior to viewing. Where provided, floor plans are shown purely as an indication of layout. They are not scale drawings and should not be treated as such. Complete listings and full details of all our properties (both for sale and to let) are available at [www.milburys.co.uk](http://www.milburys.co.uk)