

Terraced House 'To Let'

£1,400 PCM

Underhill Road, Charfield



KEY FEATURES

Mid-Terrace House – Fantastic Condition Throughout – Entrance Hall – Lounge through to Dining Room with Sliding Doors to the Garden – Kitchen with Cooker/Hob and spaces for Fridge/Freezer, Washing Machine and Tumble Dryer – Landing with Airing Cupboard – Three Bedrooms – Bathroom with Separate Shower Cubicle – Front Garden - Fully Enclosed Rear Garden with New Patio and Decked Areas – Off Street Parking – Single Detached Garage with Power and Light – Gas Central Heating – Double Glazing – Unfurnished.

EPC - C - DEPOSIT £1615.00

Description

This mid-terrace family home is presented to an extremely high standard, with light modern décor throughout. It is within walking distance to the OFSTED rated 'Outstanding' Charfield Primary School, shops and public houses. There is an entrance hall downstairs which leads through to a lounge, dining room and a lovely modern kitchen with cooker/hob. Upstairs there are three bedrooms and a family bathroom with a separate shower cubicle. Outside, there is a low maintenance front garden, enclosed rear garden with newly laid patio and decking, off street parking and a detached single garage. A truly beautiful property in a popular cul-de-sac location. Available now for six months to long term. No smokers. (EPC-C)



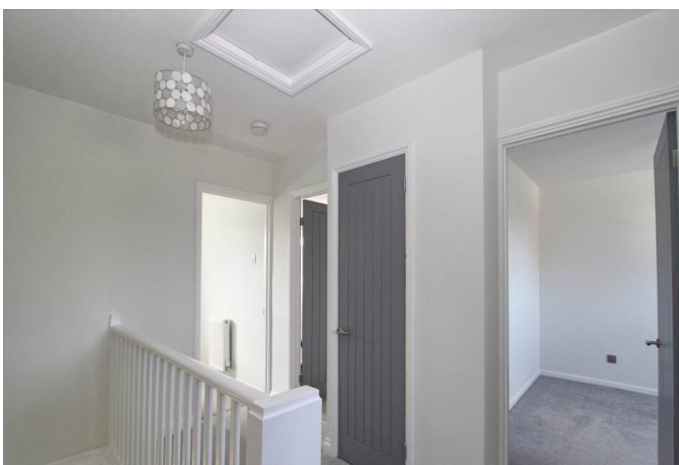
Situation

The village of Charfield is situated to the north of Thornbury and Chipping Sodbury on the B4058, approximately 2.5 mile from Junction 14 of the M5 at Falfield, connecting from there directly to Bristol in the south and Cheltenham/Gloucester to the north. The local centre of Wotton-under-Edge is approximately 2.5 miles further to the east, passing the road to Katharine Lady Berkeley secondary school on route. Charfield has a primary school, a selection of shops, a post office, public houses, and a petrol station.



Local Authority & Council Tax

SouthGloucestershireCouncil
Council Tax Band - B

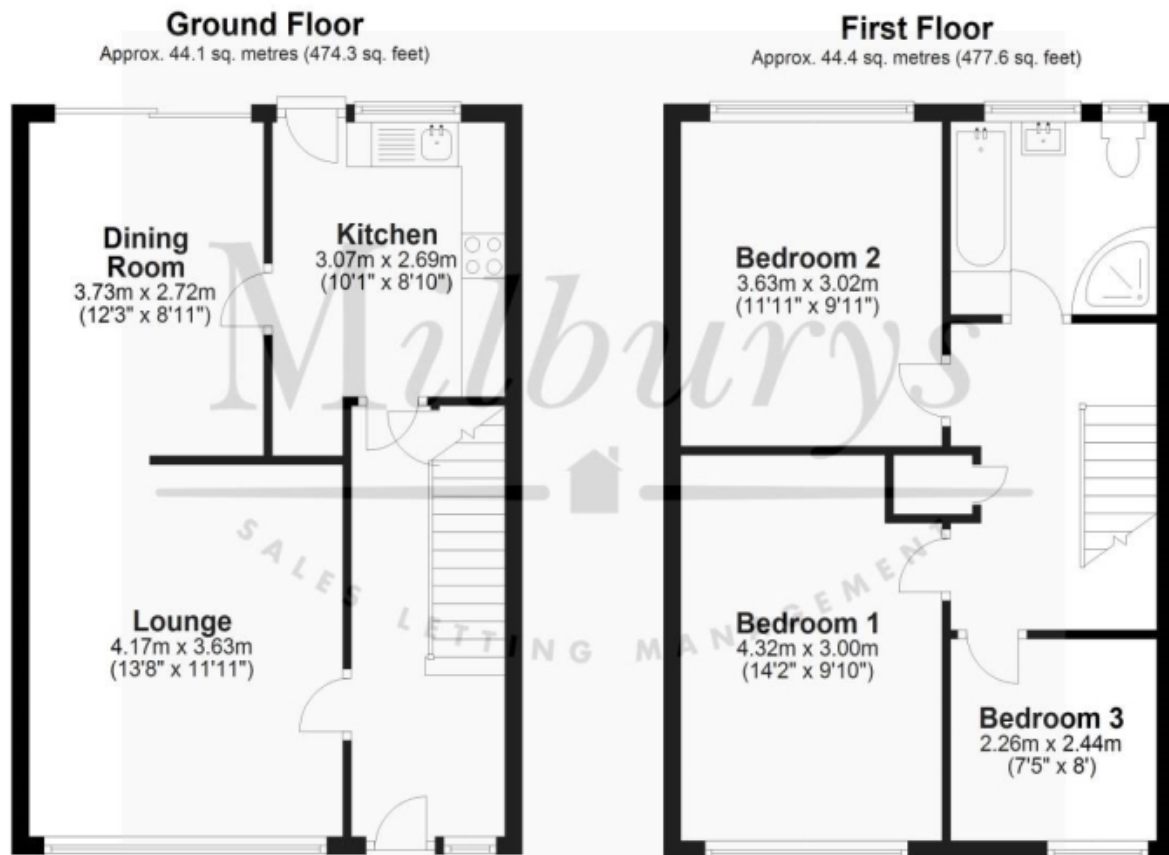


Contact & Viewing

T: 01454 417336
w: www.milburys.co.uk



Floorplan



Additional Photos



Important Notice

Milburys Estate Agents Ltd, their clients and any joint agents give notice that they have not tested any apparatus, equipment, fixtures, fittings, heating systems, drains or services and so cannot verify they are in working order or fit for their purpose. Interested parties are advised to obtain verification from their surveyor or relevant contractor. Statements pertaining to tenure are also given in good faith and should be verified by your legal representative. Digital images may, on occasion, include the use of a wide-angle lens. Please ask if you have any queries about any of the images shown, prior to viewing. Where provided, floor plans are shown purely as an indication of layout. They are not scale drawings and should not be treated as such. Complete listings and full details of all our properties (both for sale and to let) are available at www.milburys.co.uk